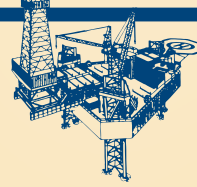


SPARTAN

OFFSHORE DRILLING



SPARTAN 151
SPARTAN 202
SPARTAN 208
SPARTAN 303
MULTI-PURPOSE
JACK-UPS
PLATFORM RIGS

Rig Portfolio



- **Refurbished to new in 2006**
- **Water depths from 12 to 150 ft.**
- **Drilling depth rating: 25,000'**
- **Three (3) drilling mud pumps**
- **2,000 HP drawworks**
- **Top drive, Varco TDS-3**
- **Quarters for 54 personnel**

Drilling Vessel Description Designed and constructed by Baker Marine Corporation in 1981 (completely refurbished and upgraded in 2006), the 150' independent leg/cantilever unit was built in accordance with the rules of the American Bureau of Shipping and is classified as an A-1 self-elevating mobile drilling unit

Type Baker Marine Corporation 150 H class independent leg cantilever jackup

Class ABS + A1 self-elevating mobile drilling unit, 1980
Rules: USCG Requirement for Mobile Offshore Drilling Units

Design Operating Conditions Maximum water depth (non-hurricane).....150'
Minimum water depth12'
Drilling depth..... 25,000'

Maximum Operating/ Environmental Conditions **Normal drilling:**
Variable deck load 3,313 Kips
Drilling load..... 1,000 Kips
Wind speed.....70 Knots
Wave height..... 35'

Hurricane Survival Water depth130'
Variable load..... 2,313 Kips
Wind speed..... 100 Knots
Wave height.....45'

Drillfloor Loading Rotary beam load1,300,000 lbs
Setback.....500,000 lbs
Combined hook and setback 1,300,000 lbs

Cantilever

- Capable of extending 40' beyond hull's stern transom
- Drill floor, skids transversely 10' from center, port or starboard
- Entire cantilever and drill floor designed to skid off the hull to facilitate work on large platforms or remote well bays

Legs Three (3) triangular Truss type, 250' - 3" long

Rig Storage Capacities **Weight material and cement:**
Bulk mud..... 3,000 cu. ft
Bulk cement..... 3,000 cu. ft
Sack storage..... 5,000 sacks

Rig Storage Capacities **Liquids:**
Drilling mud.....1,315 bbls.
Drill water.....3,373 bbls.
Diesel fuel.....1,543 bbls.
Potable water.....1,186 bbls.

Elevating System Baker Marine electrohydraulic drive rack and pinion system

Engine Generator Units

- Four (4) Caterpillar D-398, radiator-cooled diesel engines, each driving an 800 kW, 600 volt, 60 Hz AC generator
- One (1) Caterpillar D-398, radiator-cooled engine driving an 800 kW, 600 volt AC generator – can be used as a standby or on main AC buss
- Two (2) Caterpillar D-399, radiator-cooled diesel engines, each driving a 1,050 kW, 600 volt AC generator to be used for the top drive and drawworks

Electrical Distribution

- Ross-Hill Model 1400 four (4) bay SCR distribution system for drilling and shipboard operations
- Gulf Coast two (2) bay SCR systems for powering the drawworks and top drive

Drawworks

- Mid-Continent U-1220 driven by two (2) GE 752 DC motors each rated at 1000 HP (intermittent)
- Two (2) catheads, 1-3/8 Lebus grooving, crown safety device, and Elmagco 7838 electric brake

Derrick Branham 147' high x 30' base rated at 1,300,000 lbs static hook load; complete with adjustable air-powered casing stabbing board, derrick climbing assistor, racking platform

Mud Pumps

- Two (2) Gardner Denver PZ-10 triplex pumps, each pump is rated at 1,350 HP and driven by two (2) GE 752 DC motors complete with suction and discharge pulsation dampeners
- One (1) FB 1600 Triplex Pump; 1,600 HP, rated at 11,600 HP and driven by two (2) GE 752 DC motors complete with suction and discharge pulsation dampeners
- Note: Spartan Offshore will provide one (1) size liner for mud pumps. Operator to designate size prior to rig mobilization. The pumps shall be operated at a maximum of 85% of manufacturer's stroke and pressure rating when operating on a continuous basis.

Rotary National C-375 with a 37.5" opening, independently driven by a GE 752 DC motor through a two-speed gear box complete with air brake

Top Drive Varco TDS-3 powered by a GE 752 traction motor hi-torque

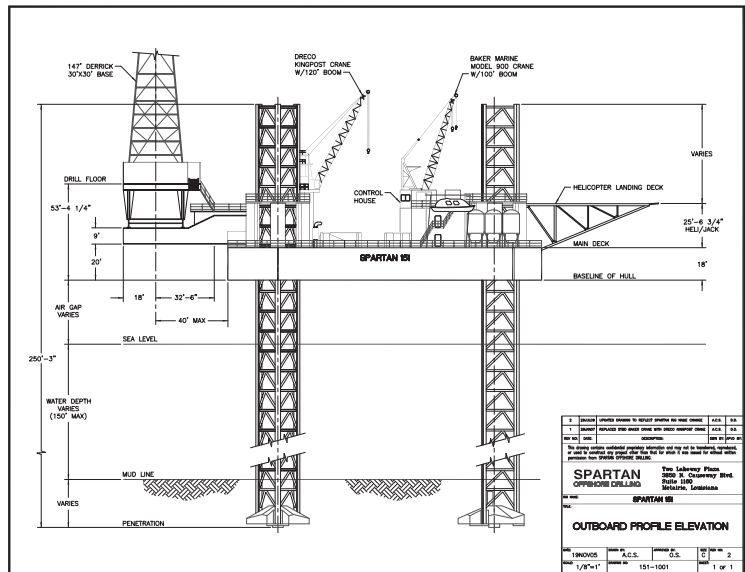
Ezy-Torque Varco

Shale Shaker Two (2) Brandt King Cobras

Desander/Desilter/Mud Cleaner One (1) Brandt King Cobra mud cleaner unit with three (3) cone desanders and twenty-four (24) cone desilters

Degasser Brandt DG-5 (500 gpm)

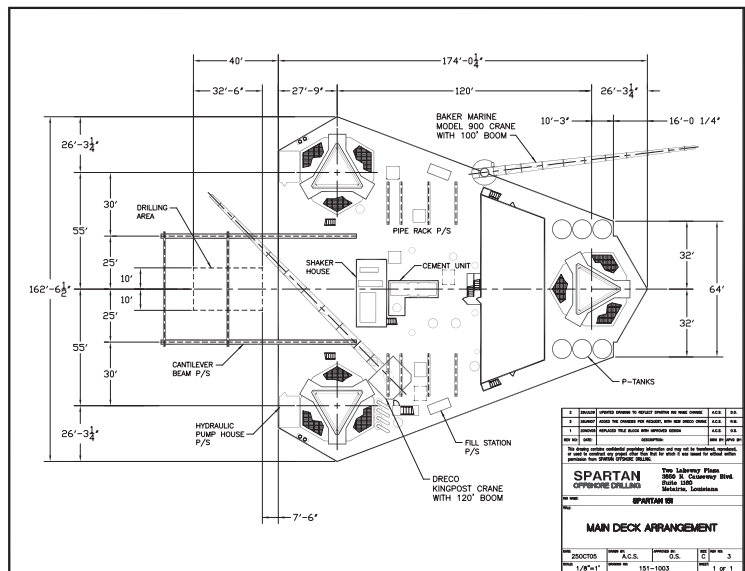
Quarters 53-person air-conditioned quarters complete with galley, mess hall, recreation room, hospital room, bath facilities, change room, laundry and state rooms and office for rig manager and operator's representatives



Heliport 62' nominal diameter designed for Sikorsky S-61 loading

Cranes

- One (1) Baker Marine Model 900 crane with 100' boom rated at 49,965 lbs at a 20' radius and 41,055 lbs at a 40' radius
- One (1) Draco King Post crane to accommodate heavier loads; 80,000 lbs at 25'



Cementing Unit BJ Unit is onboard; costs for the unit and associated equipment shall be for operator's account

Life Saving and Fire Protection

- Two (2) 65-person life boats
- CO₂ fire extinguisher system or both engine room and emergency generator room
- All safety and fire protection equipment per USCG, ABS and MMS regulations

BOP Equipment (All have safety H2S)

Diverter 21-1/4" with hydro-control valves and overboard lines 2,000 psi (recharged per contract provisions)

Annular 13-5/8" Hydril Type GK; 5,000 psi

Single 13-5/8" Cameron Type U; 10,000 psi

Double 13-5/8" Cameron Type U; 10,000 psi

Gate Valves Two (2) 4-1/16" Cameron Type F; 10,000 psi

Accumulator Koomy Type 80: 7 station, 22 bottle, 3,000 psi closing unit with two (2) air pumps, a triplex electric-driven pump

Choke Manifold 3-1/16" 10,000 psi, with two (2) adjustable chokes and one (1) Swaco automatic choke

Handling System Two (2) 25-ton pneumatic hoists with a BOP lift ring to install BOPs

Choke & Kill Hoses One (1) each

Note Contractor will provide the initial size rams for contractor supplied drill pipe and one (1) set of shear rams. All replacement BOP rubber goods shall be recharged per contract.

