

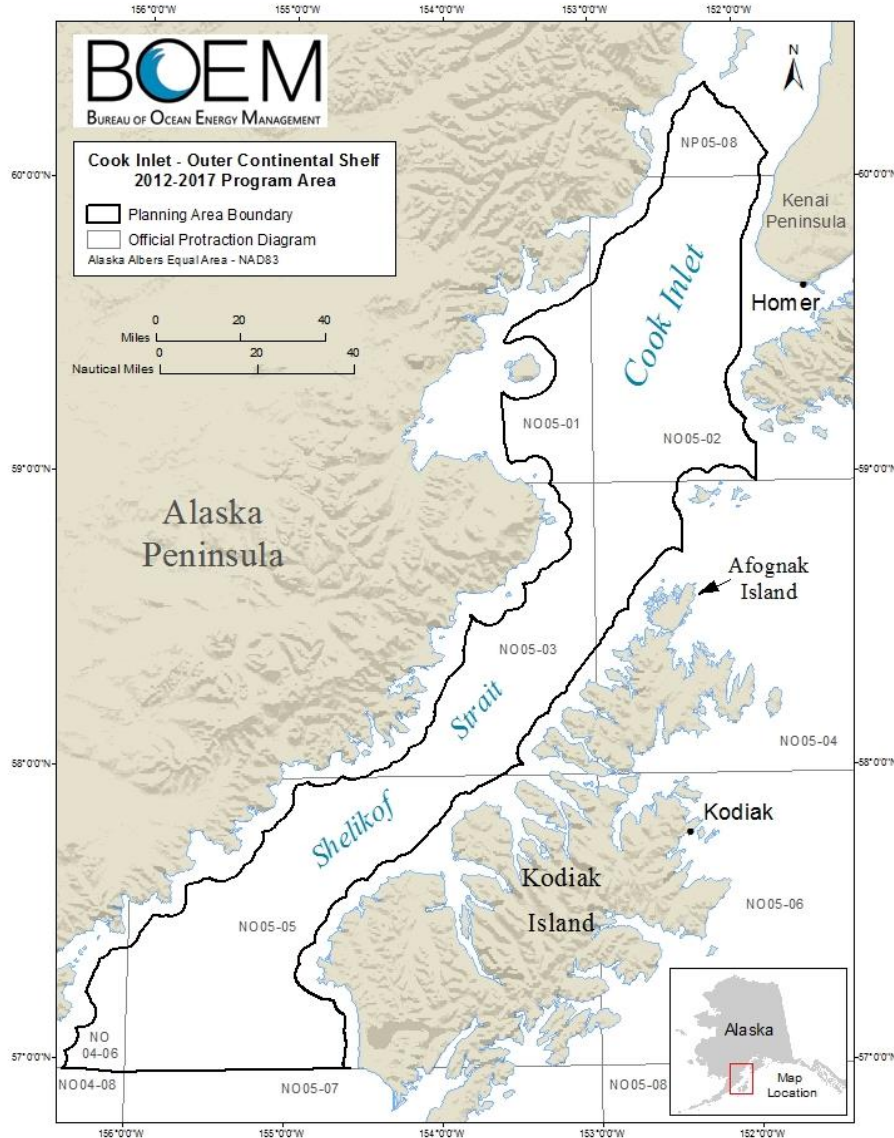


BOEM Research in Cook Inlet

2015 and beyond

Heather Crowley





Lease Sale 244
in Cook Inlet
is planned for 2016



BOEM seeks to **update information about the physical and biological environment** in Cook Inlet and Shelikof Strait to support NEPA analysis for the upcoming lease sale. Some particular interests for information in Cook Inlet include, but are not limited to:

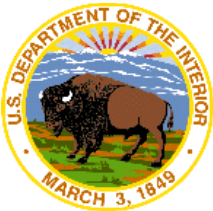
- An improved understanding of **circulation and water mass movement** in lower Cook Inlet
- Assessment of **variability and long-term trends** in oceanographic conditions and biological communities
- Use of the area by **sensitive species** including cetaceans, sea otters, pinnipeds, and seabirds



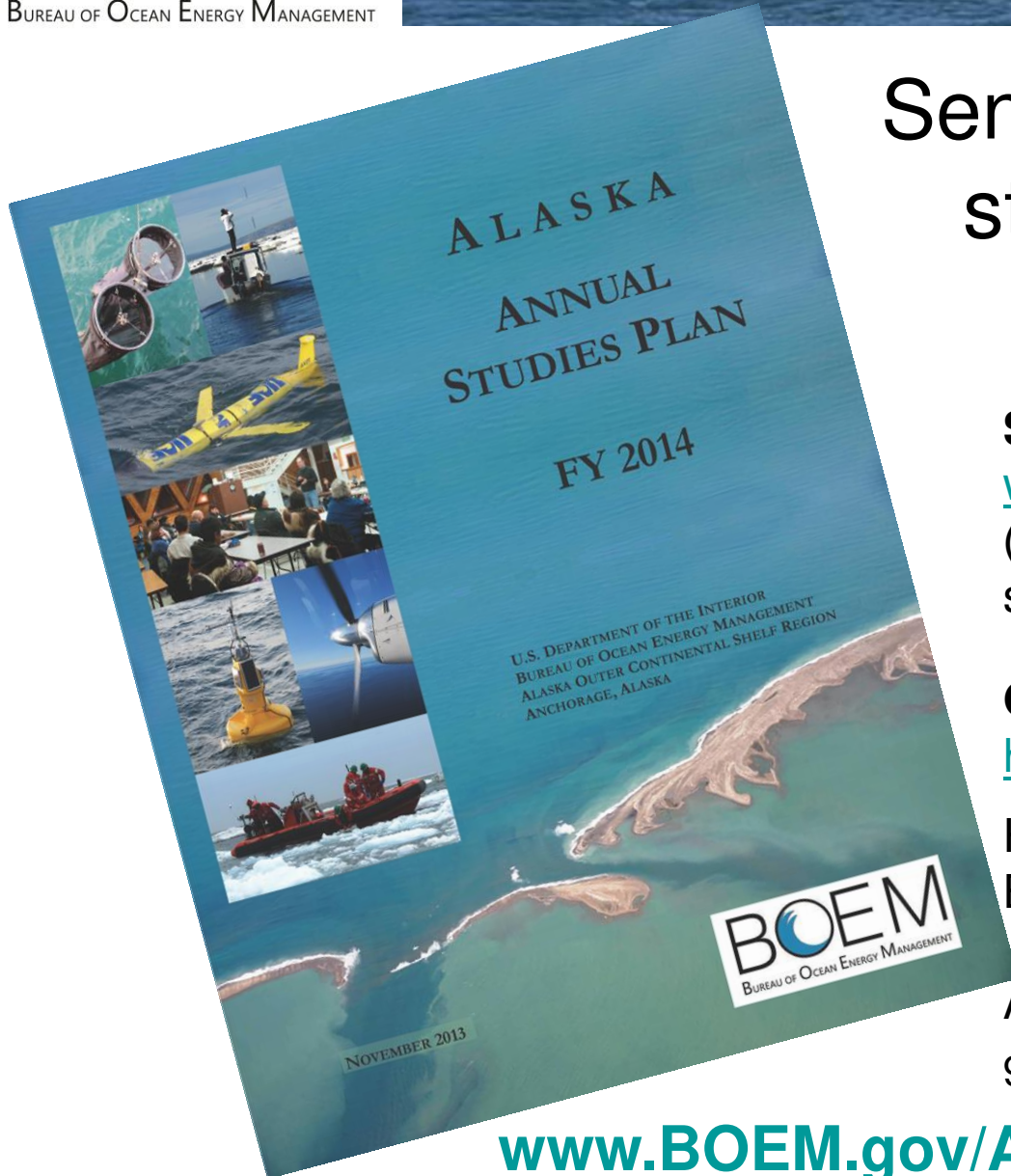
- Cook Inlet Circulation Modeling Study coming soon!
 - This study will support BOEM's oil-spill trajectory modeling.
 - 5-10 year hindcast simulation
 - Providing BOEM with wind and 3-D current fields



- As always, BOEM actively seeks to leverage research dollars through partnerships with other agencies and organizations.
- The University of Alaska Coastal Marine Institute (CMI) is one such cost-sharing opportunity for non-Federal entities to partner with BOEM to support research in Cook Inlet, as well as the Arctic.



Alaska Annual Studies Plan



Send us your input and
study suggestions!
due December 20

Submit your ideas online:

www.regulations.gov

(enter "BOEM-2011-0096" in the
search box)

Or send them to me:

heather.crowley@boem.gov

Heather Crowley

BOEM

3801 Centerpoint Drive, Suite 500
Anchorage, AK 99518

907-334-5281

www.BOEM.gov/AKstudies

