

ADF&G

Division of Habitat



Mission: To protect Alaska's valuable fish and wildlife resources and their habitats as Alaska's population and economy continue to expand.

Division of Habitat

Kenai Peninsula Contacts

Ginny Litchfield
Kenai Peninsula Area Manager
907 714-2477

Patti Berkhahn
Habitat Biologist III
907 714-2476

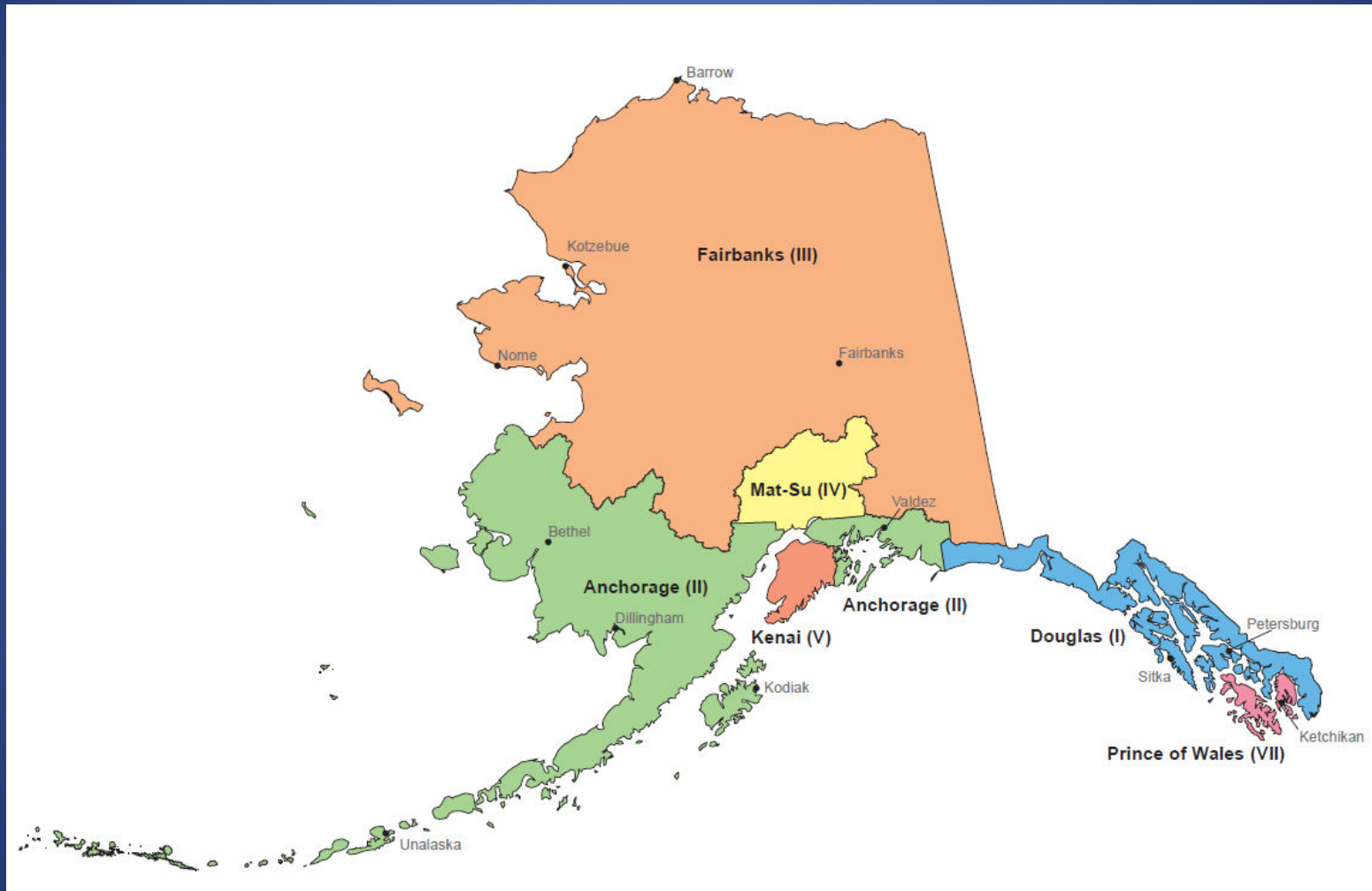
Brian Blossom
Habitat Biologist I
907 714-2481

Bryr Harris
Program Technician
907 714-2475

Habitat Division
River Center
514 Funny River Road
Soldotna, AK 99669

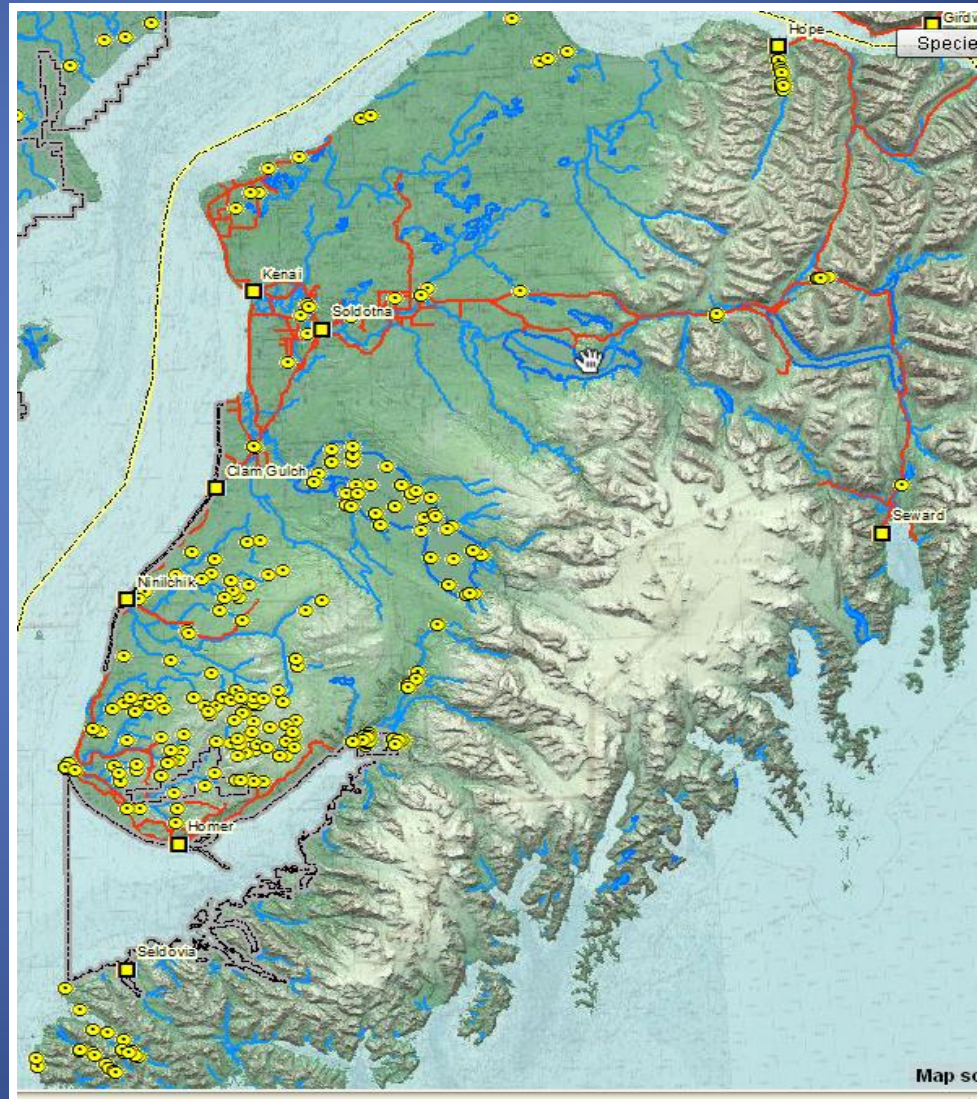


Statewide ADF&G Habitat Areas



Jurisdiction Kenai Peninsula

Kenai Peninsula Borough
Excluding the West Side
Of Cook Inlet





ADF&G Habitat Priorities

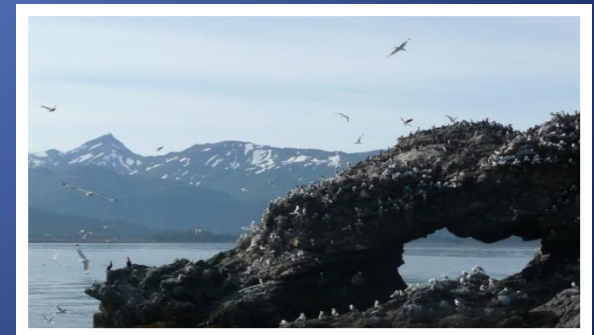
Title 16 Fish Habitat Permits



Title 16 Special Area Permits



Anadromous Waters Catalog



Title 16 Fish Habitat Permits

•AS 16.05.871: Anadromous Fish Act

All activities within or across a specified anadromous waterbody and all instream activities affecting a specified anadromous waterbody require approval from the ADF&G, including construction; road crossings; gravel removal; mining; water withdrawals; the use of vehicles or equipment in the waterway; stream realignment or diversion; bank stabilization; blasting; and the placement, excavation, deposition, or removal of any material.

•AS 16.05.841: Fishway Act

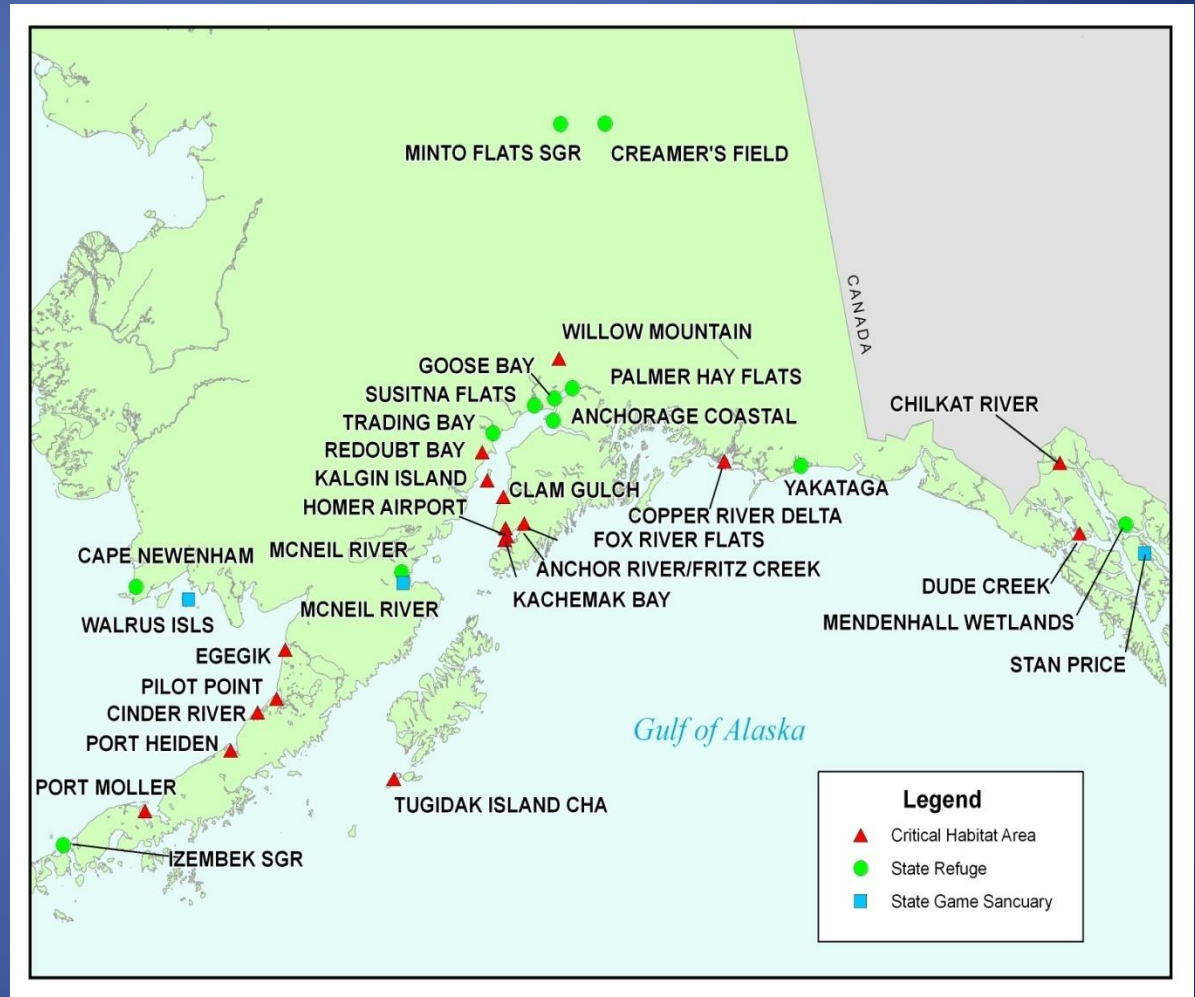
For activities within or across a stream used by fish that could represent an impediment to the efficient passage of fish, e.g., culverts; water withdrawals; stream realignments or diversion; dams; low-water crossings; and construction, placement, deposition, or removal of any material or structure below ordinary high water



Critical Habitat/Special Areas

AS 16.20 State Game Refuges, Game Sanctuaries, and Critical Habitat Areas

- Special Area Permits
- Special Area Plans

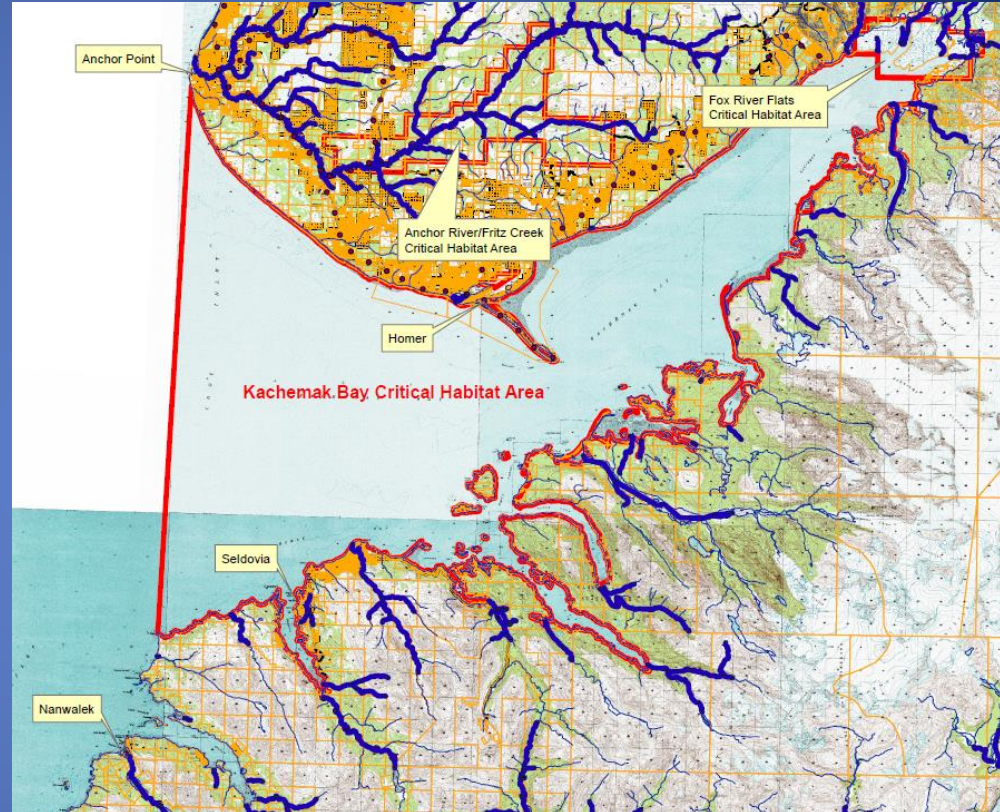


Kenai Peninsula Critical Habitat Areas

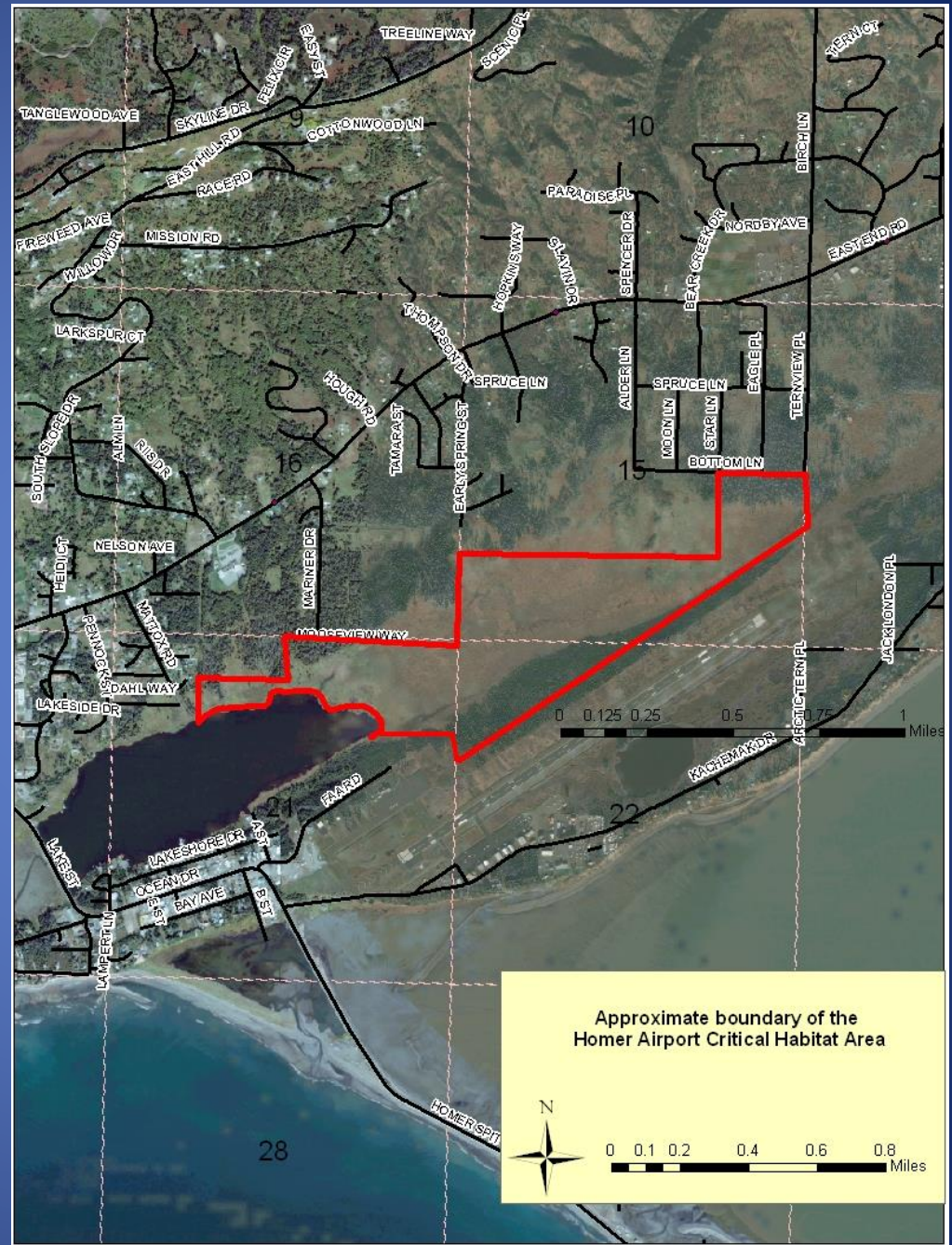
AS 16.20.590 Kachemak Bay CHA

AS 16.20.605 Anchor River/Fritz Creek CHA

AS 16.20.580 Fox River Flats CHA



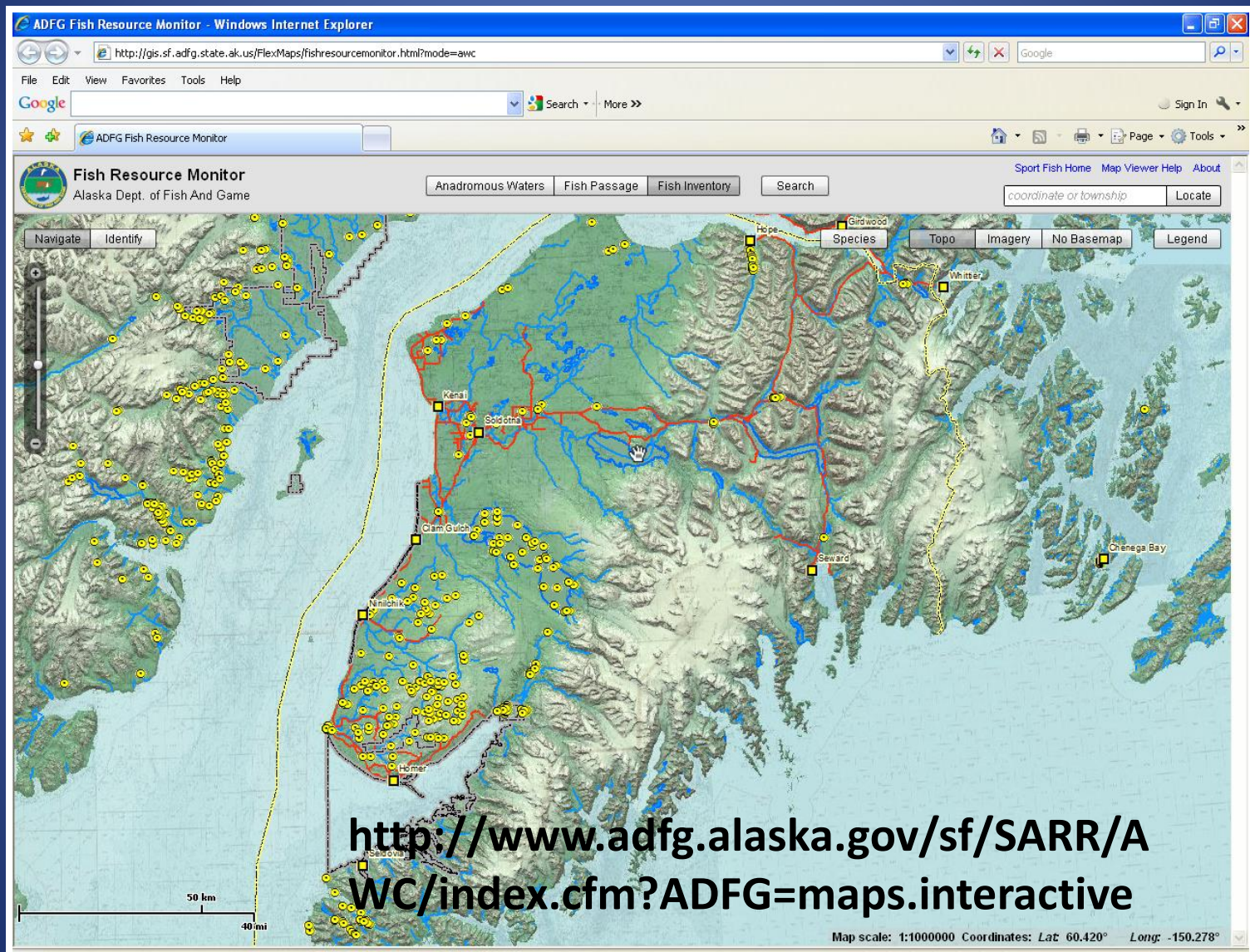
AS 16.20.605 Homer Airport CHA



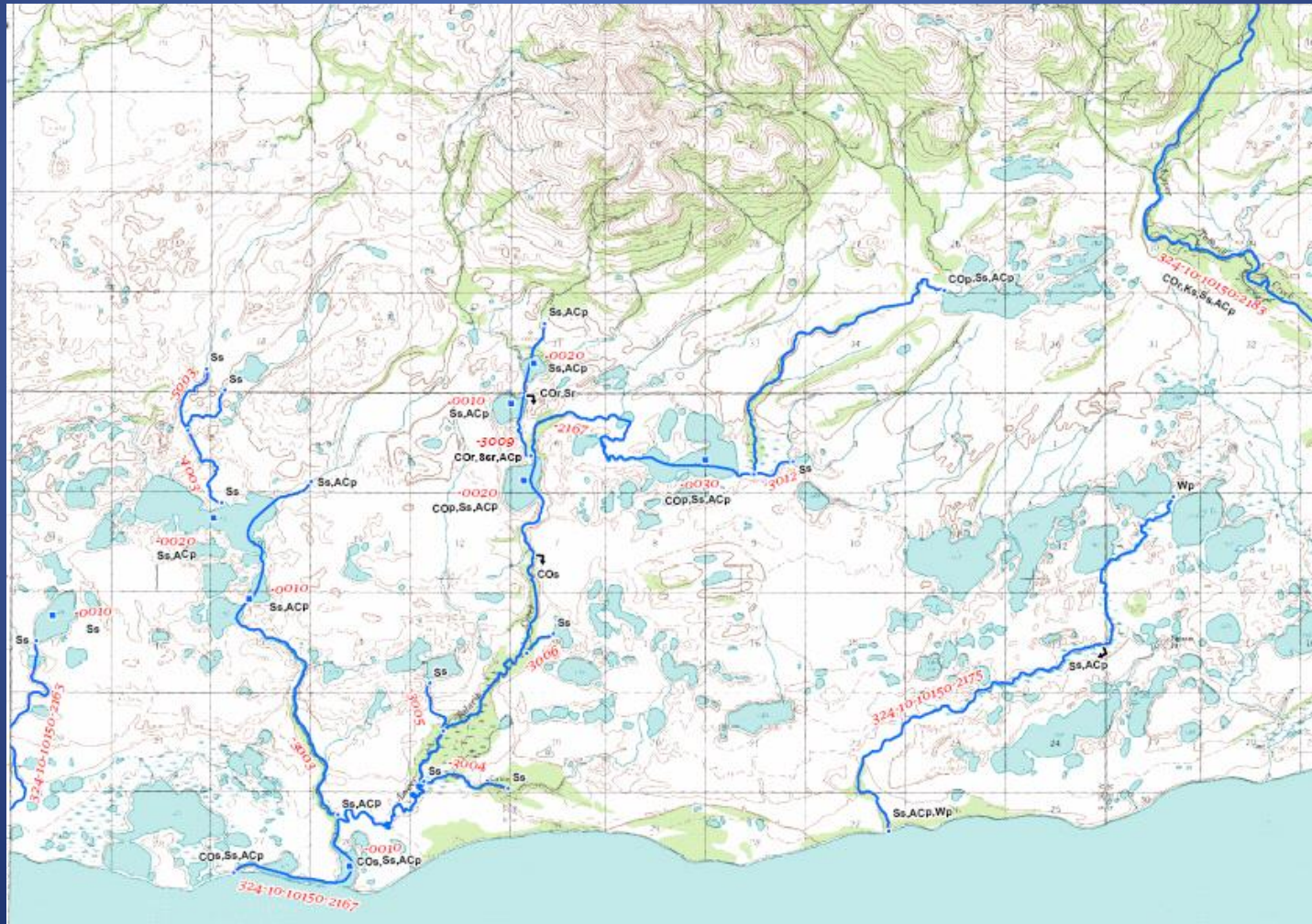
AS 16.20.595 Clam Gulch CHA



Anadromous Waters Catalog



Easy to Pinpoint Anadromous Streams



Common Activities





Common General Permits

- 13-V-0001-GP Vehicle movement on frozen water, <12,000 lbs gross vehicle weight (GVW)
- 13-V-0002-GP Quartz Creek Established Crossing < 12,000 lbs GVW
- 13-V-0003-GP CGCHA 10,000 lbs or less GVW
- 13-V-0005-GP KBCHA 10,000 lbs or less GVW
- 13-V-0006-GP ARFCCHA <1,000 lbs dry weight
- 13-V-0007-GP FRFCHA <1,000 lbs dry weight
- 13-V-0008-GP to 0011-GP Established crossings; various weight restrictions

2013 Permits Issued

- Soldotna Anchorage Mat-Su
 366 494 1,372
- Oil & Gas Specific Including Seismic & Stream Crossings
- Soldotna Anchorage Mat-Su
 9 2 20



2013 Site Visits

- Soldotna Anchorage Mat-Su
221 94 383
- Oil & Gas Specific Including Seismic & Stream Crossings
- Soldotna Anchorage Mat-Su
4 0 0



2013 Oil & Gas Highlights

- Seismic Surveys
- Stream Crossings
- Blasting
- Spill Drills



Future Projects

- Seismic
- Stream Crossings
- Spill Drills
- Pad Construction
- Gas line to Nikiski



Everybody Benefits from Healthy Habitats

