



Steve Ribuffo, Deputy Port Director

Cook Inlet Regional Citizens Advisory Council, 6 Dec 2013





In operation since 1961





220 acres

2 miles of rail spur



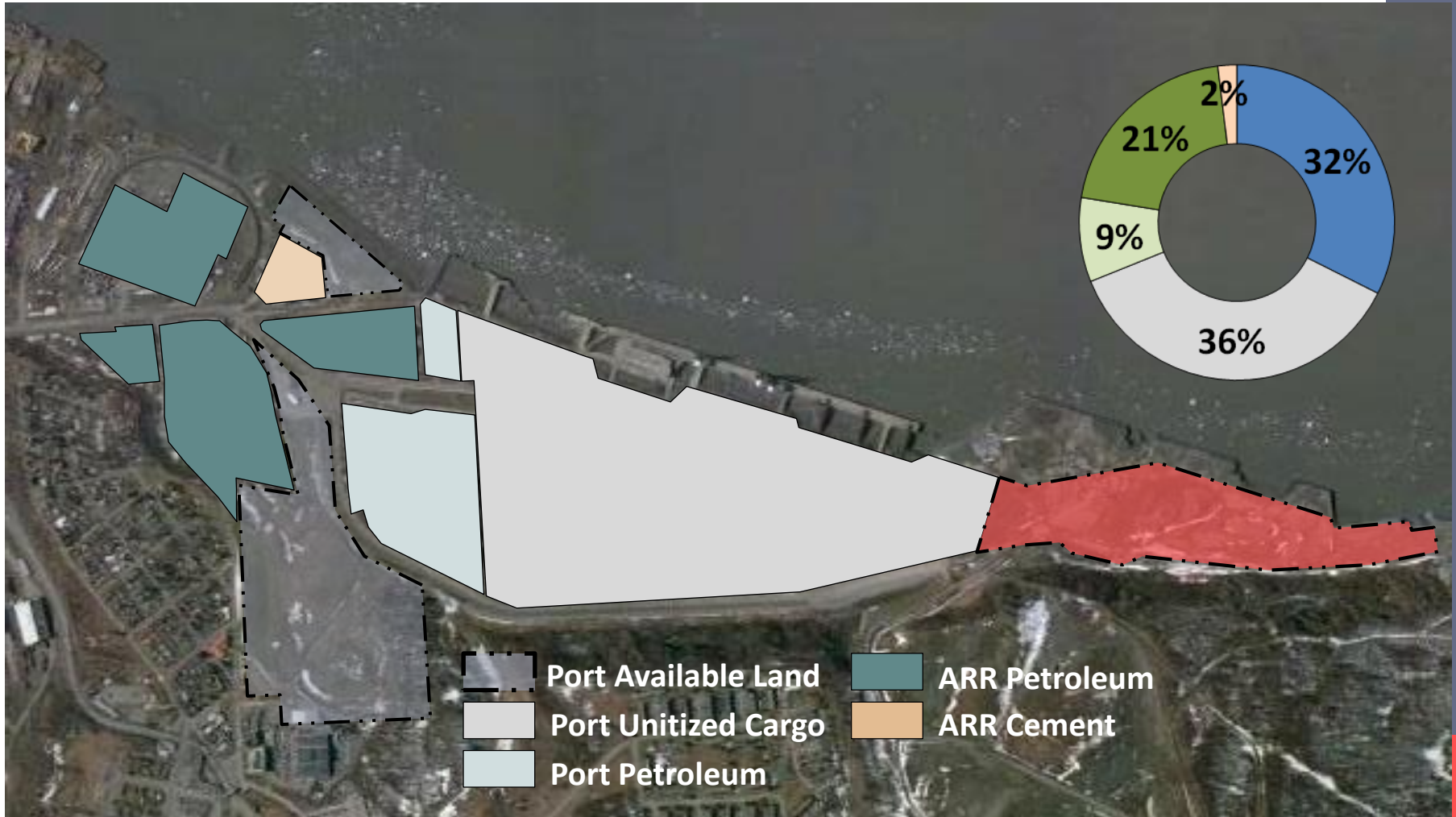
PORT OF ANCHORAGE

JUNE 2010

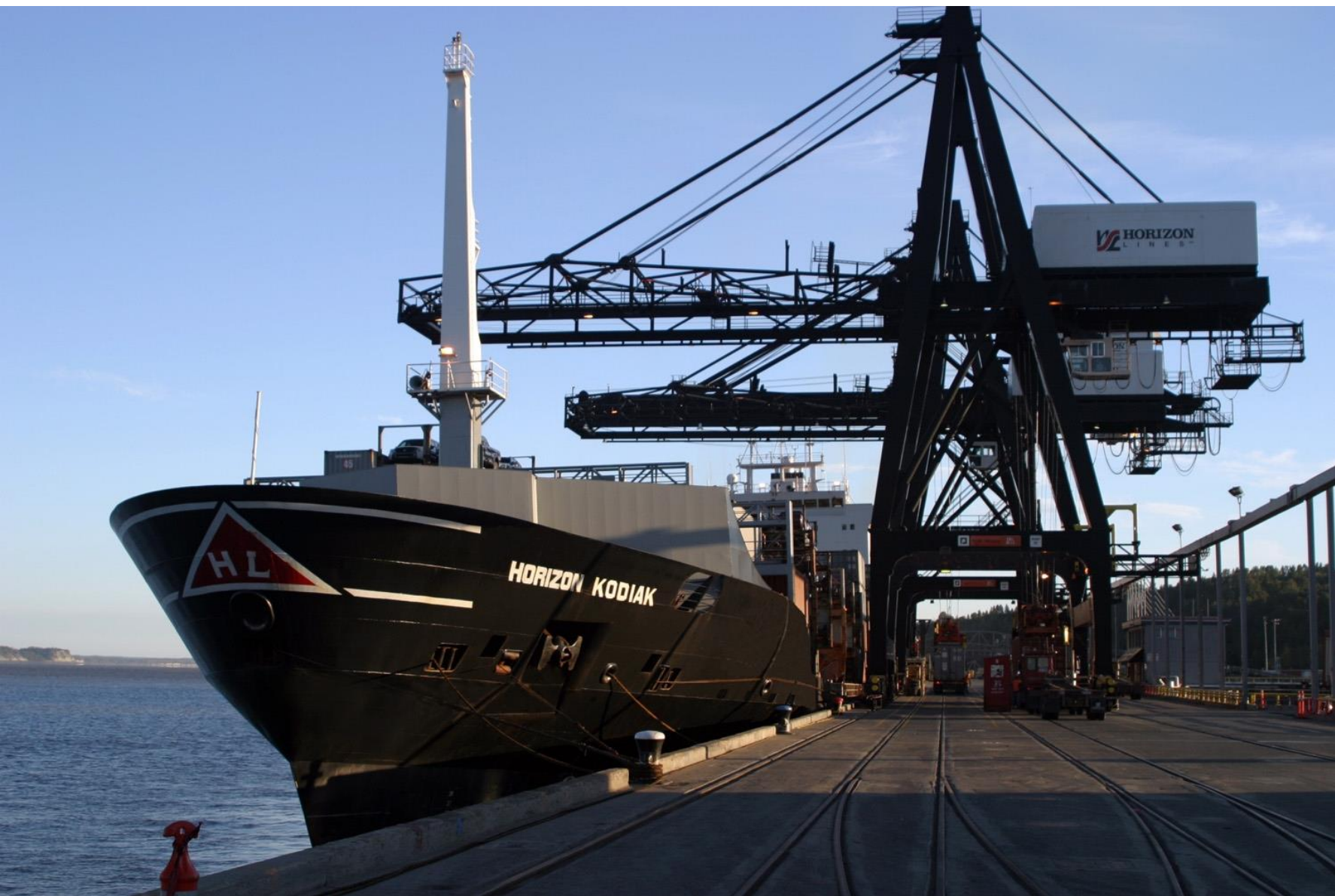
— AREA OF OPERATIONS



Land Use Map



DRAFT

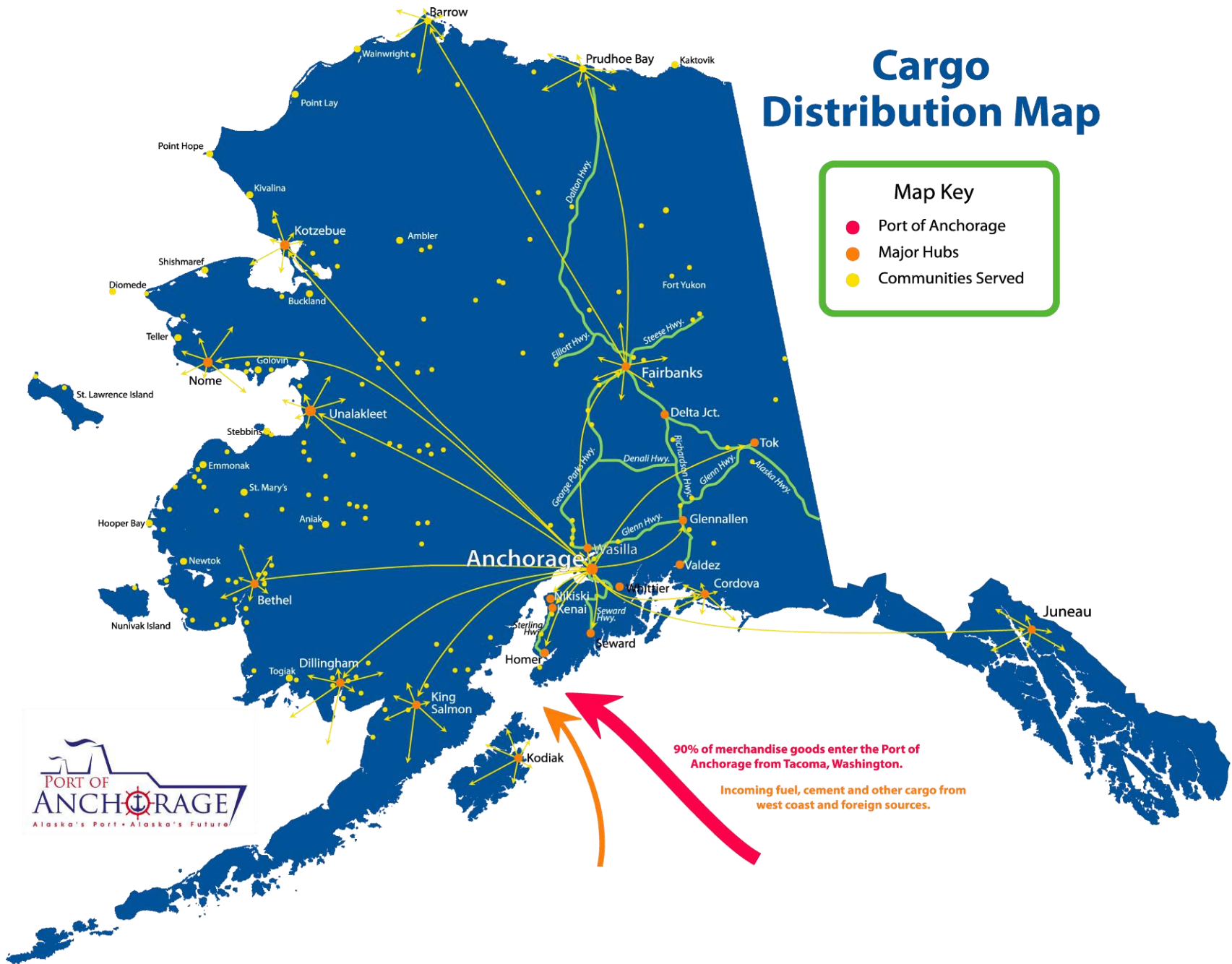




Cargo Distribution Map

Map Key

- Port of Anchorage
- Major Hubs
- Communities Served



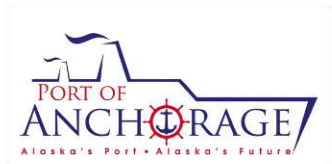
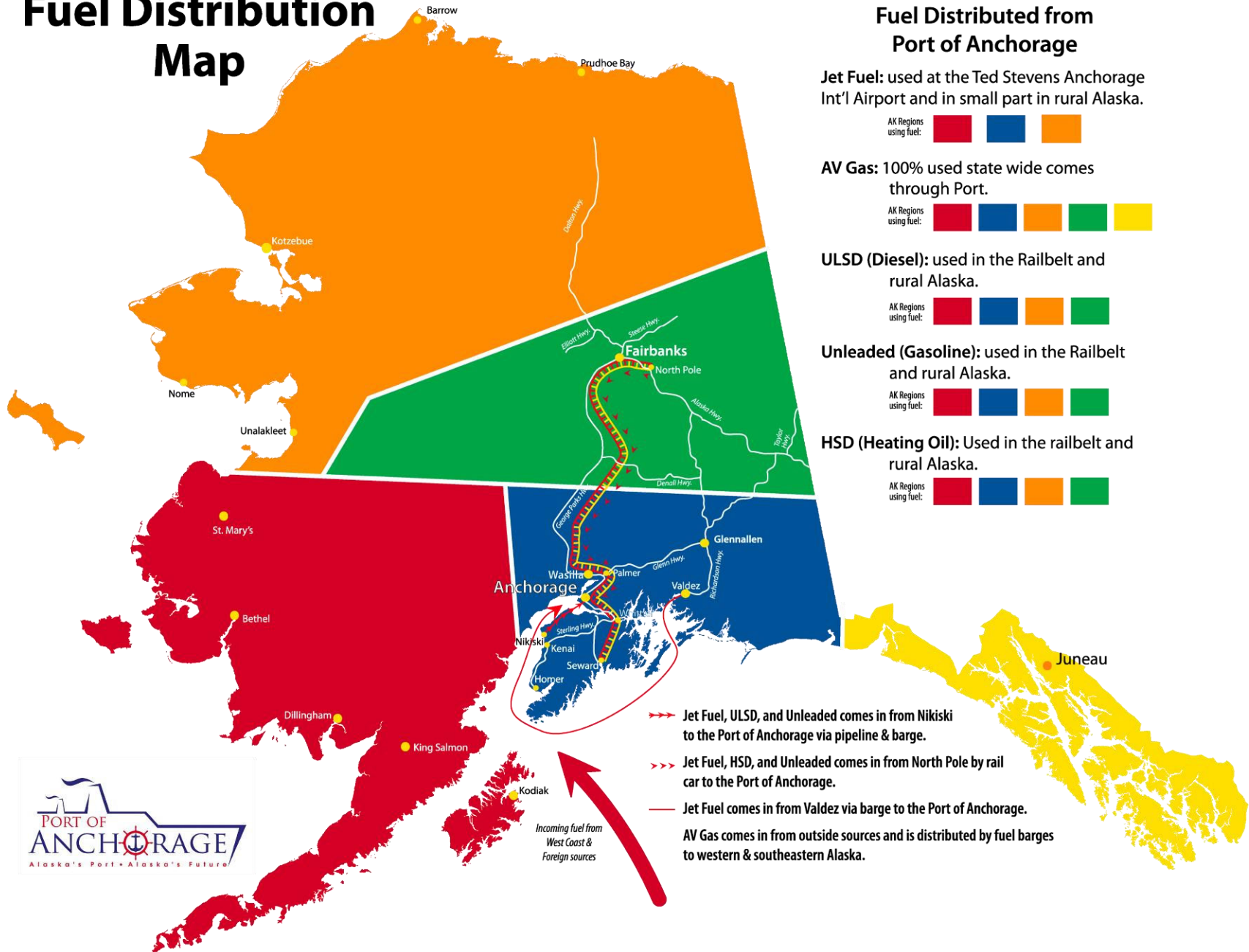
90% of merchandise goods enter the Port of Anchorage from Tacoma, Washington.

Incoming fuel, cement and other cargo from west coast and foreign sources.





Fuel Distribution Map





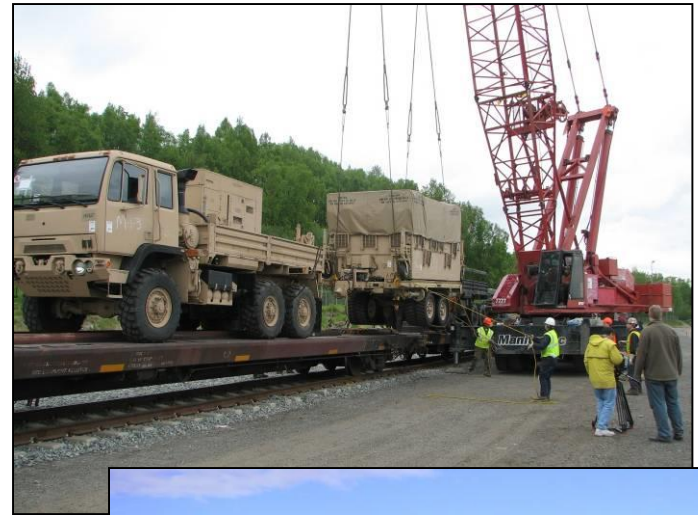






What We Do for the Military

- 1 of 19 National Strategic Ports
- Over 30 successful deployments since 9/11



Infrastructure – 4-1/2 mile long Cherry Hill Haul Road connects JBER directly to the Port of Anchorage



A large yellow crane is lifting a heavy engine component from a ship's deck. The component is covered in a blue tarp and is being hoisted by several cables. The ship's white superstructure is visible in the background. The ground is wet, suggesting recent rain. Several workers in high-visibility vests are standing near the crane. A yellow forklift is also visible on the right side of the frame. The sky is overcast and grey.

Heavy Dual-Fuel Engines for MEA's Eklutna Project.

10 of them @ 660K lbs. each!



**Special 20-axle rail car from the Port
to MEA Power Plant in Eklutna.**



Expansion Project

- **TWO PROJECT-RELATED REPORTS OF NOTE**

- A USDOT Inspector General internal audit of MARAD's project management practices
 - <http://www.portofalaska.com/images/documents/marad%20oversight%20of%20port%20infrastructure%20development%20projects8-2-13.pdf>.
- An independent review of the CH2M Hill Suitability Study performed by Simpson, Gumpertz & Heger (SGH).
 - http://www.portofalaska.com/images/documents/Expansion_Briefing_Booklet/sgh%20peer%20review.pdf

- **REQUEST FOR PROPOSAL (RFP) FOR PROJECT MANAGEMENT SERVICES**

- The MOA released an RFP for a project management consultant team to take the lead on managing the Port's now-scaled back expansion efforts.
 - Proposals were due in mid-October
 - Consultant selection is pending

Thank You

Steve Ribuffo, Deputy Director

Port of Anchorage

(907) 343-6203

RibuffoS@muni.org

