

# FURIE OPERATING ALASKA, LLC



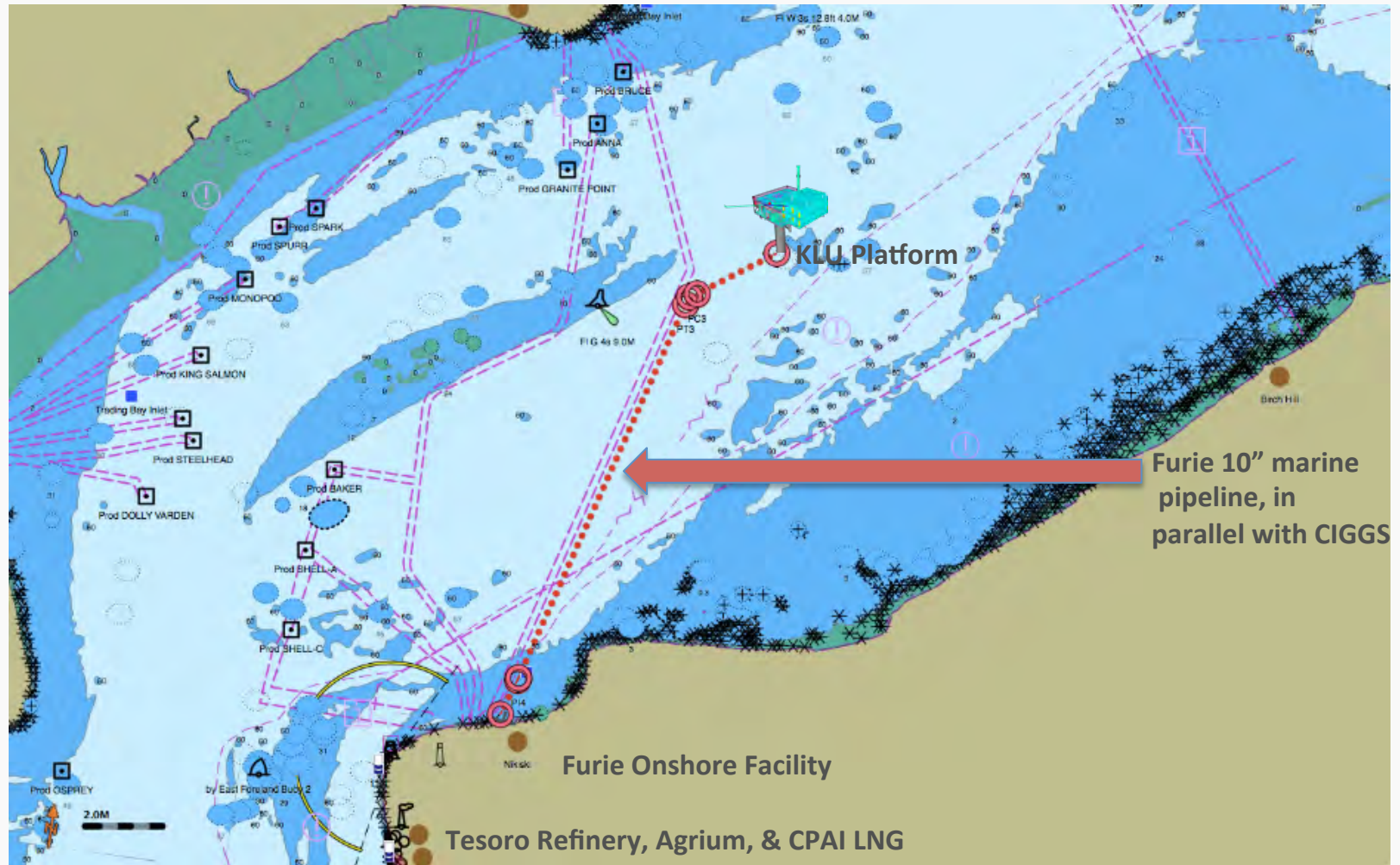
---

## Gas Development and Infrastructure Plan September 2014

---

# Platform Location and Pipeline Location

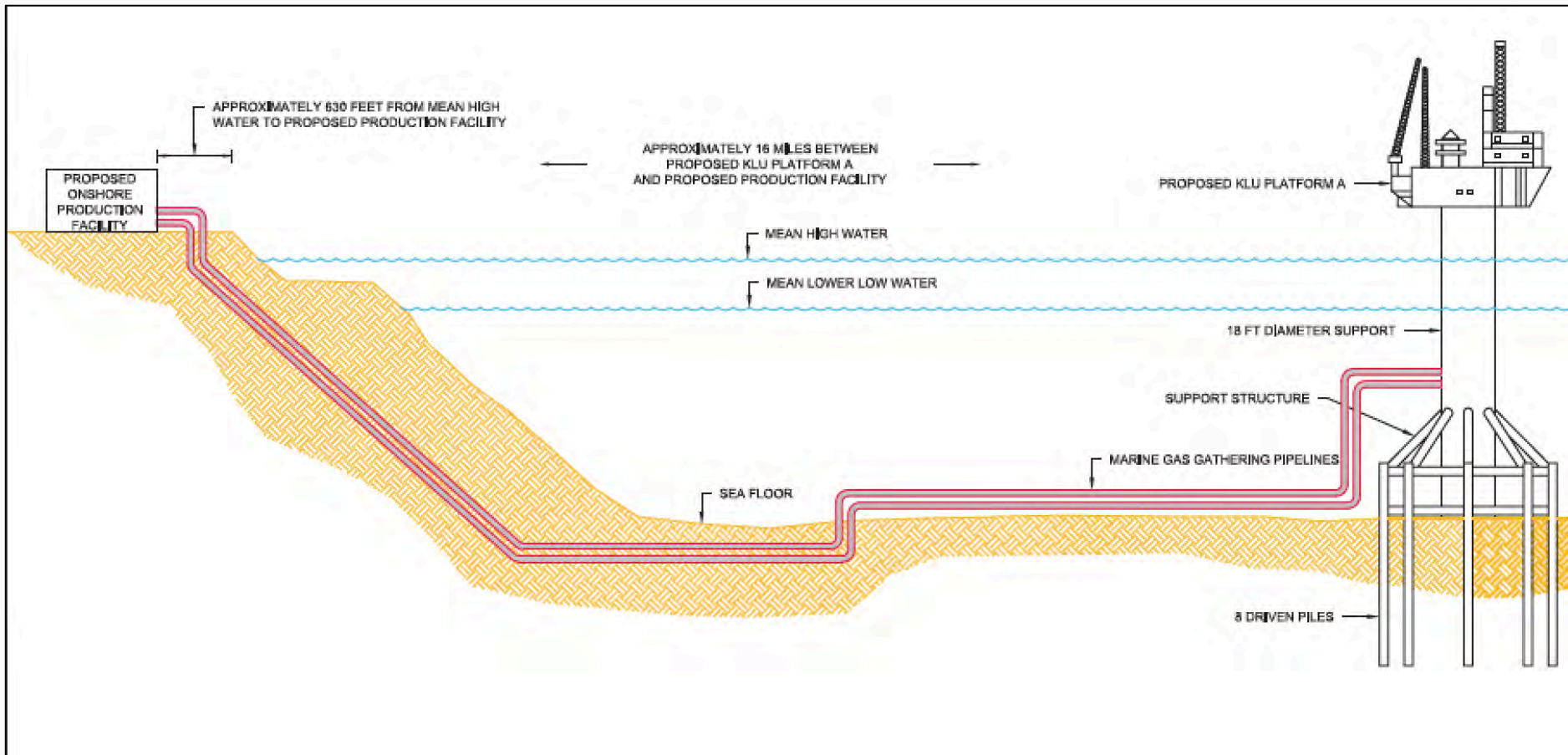
From KLU #3 Natural Gas Discovery Well location, drilled in the summer of 2013



# Platform to Onshore Facility

Conceptual Drawing with two 10" proposed pipelines

(only one 10" marine gathering line will be installed to start production)

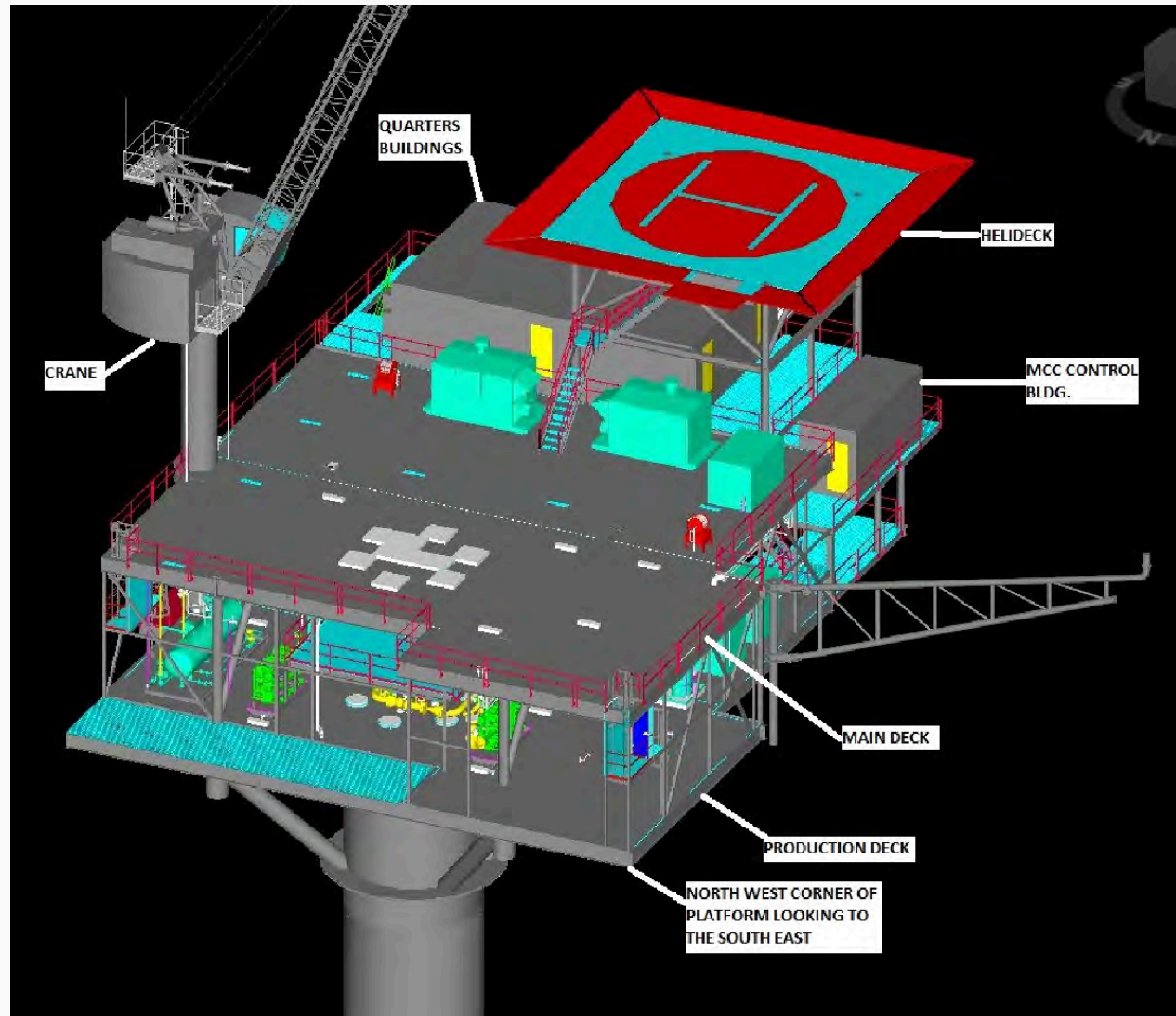




# Platform (Monopod) Overview

## Platform (Monopod) Characteristics

- | 18 ft Caisson with 8 ea 42-inch skirt piles
- | Water Depth 104 ft
- | Pile Penetration = ~ 120 ft
- | 11-ft Internal Caisson
- | 6 ea 30-inch Conductors
- | Grout between caissons
- | Rig Approach from Platform North (Spartan 151 to Cantilever for development drilling)
- | 4 ea Pipeline Risers
- | 28 man Quarters/Helideck
- | 50-Ton Crane



# Onshore Facility

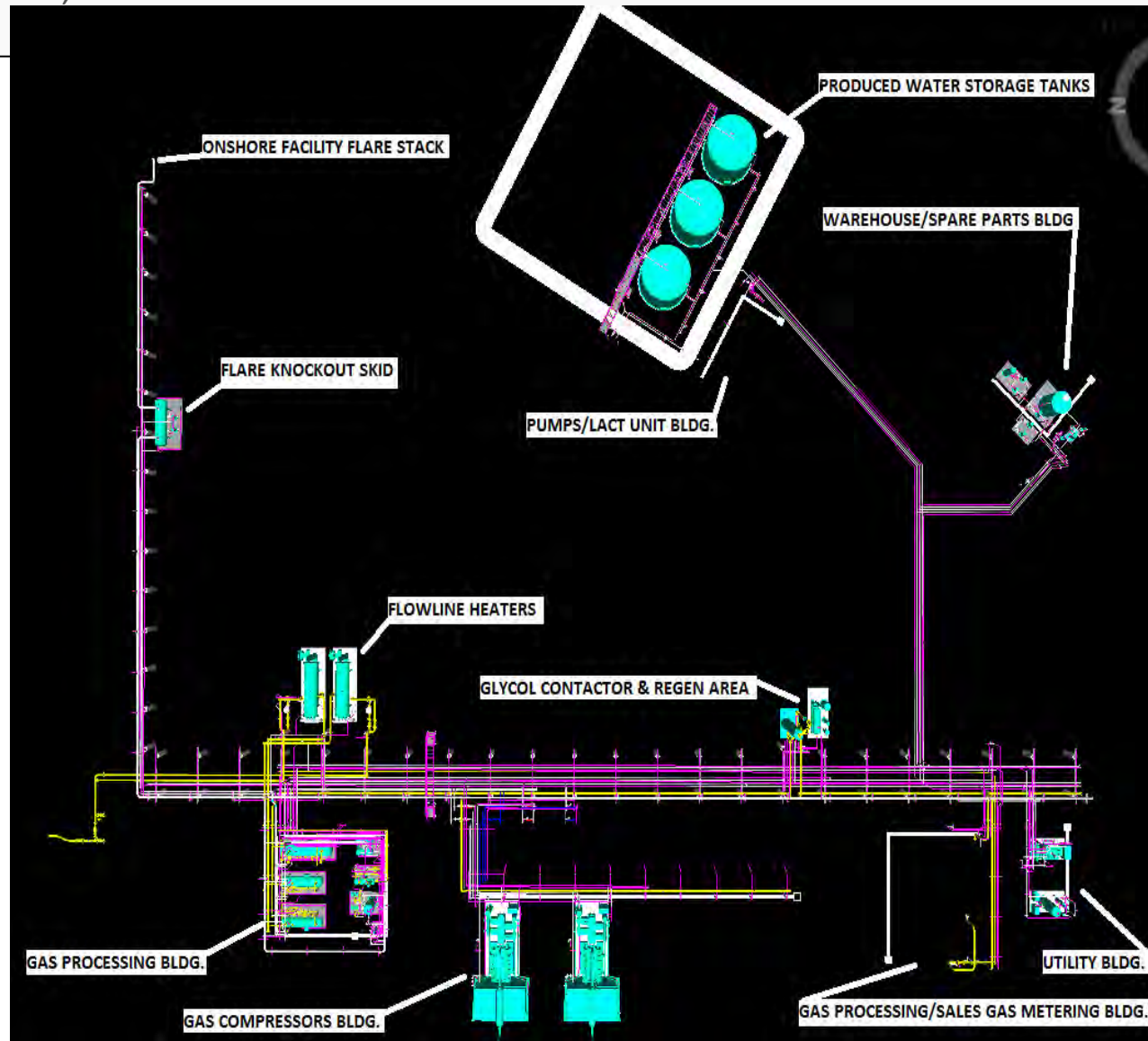
Furie 50-acre land parcel in Nikiski, AK

## Facility Specs

800-foot tie in pipeline to CIGGS utility gas line

~7-miles from Agrium, Export LNG, and Tesoro Facilities

2-phase gas/water separators one for each pipeline Glycol/gas dehydration





# Platform Fabrication Pictures – State Services (Ingleside, TX)

Production Deck (Top Left) & Main Deck (Bottom Right) – March 2014



# Platform Caisson Picture

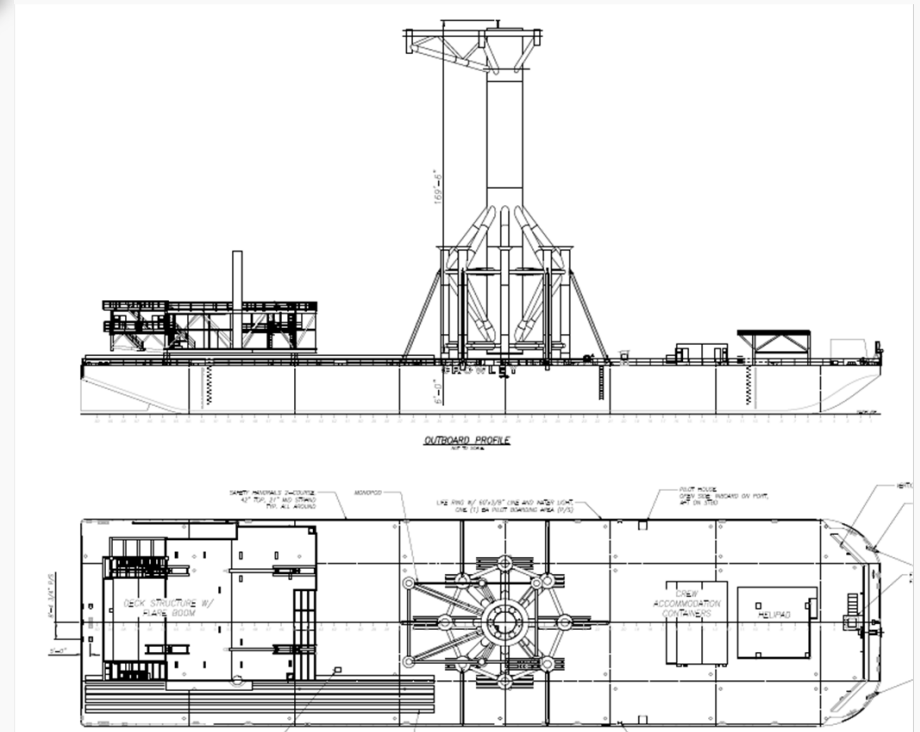
State Services, Ingleside, TX – March 2014





# Platform Transportation Barge

Monopod to be transported vertically, and production/main deck to be installed offshore. Barge will be the 455-8 with lift set





# Platform Transportation Route - Gulf of Mexico to Cook Inlet

Sail away from GOM June 4, 2014, transport to Seattle, WA arriving on , July 10, 2014

Platform Left Seattle, WA on August 31, 2014, arriving in Kachemak Bay on September 9, 2014

- Corpus Christi > Cristobal
  - 1,534 nm/ 9 days
- Panama Canal transit 5 days
- Balboa > Long Beach
  - 2,933 nm/ 16 days
- Long Beach for stores 2 days
- Long Beach > Seattle
  - 1,006 nm/ 6 days
- Seattle > Cook Inlet
  - 1,380 nm/ 10 days
- Total transit 46 days



# August 31, 2014 – Platform Departs Seattle, Washington



From Furie's onshore processing facility, 3,000 feet of the 16-inch conductor casing is being drilled to the offshore seabed. The 10-inch gathering line will be pulled through this casing.





# Horizontal Directional Drilling at the Onshore Facility

(June 2014)





# 16 Miles of Pipeline Currently Stored at Port MacKenzie (July 2014)





# September 9, 2014 – Platform Arrives in Kachemak Bay



Bruce Webb  
Vice President  
[b.webb@furiealaska.com](mailto:b.webb@furiealaska.com)